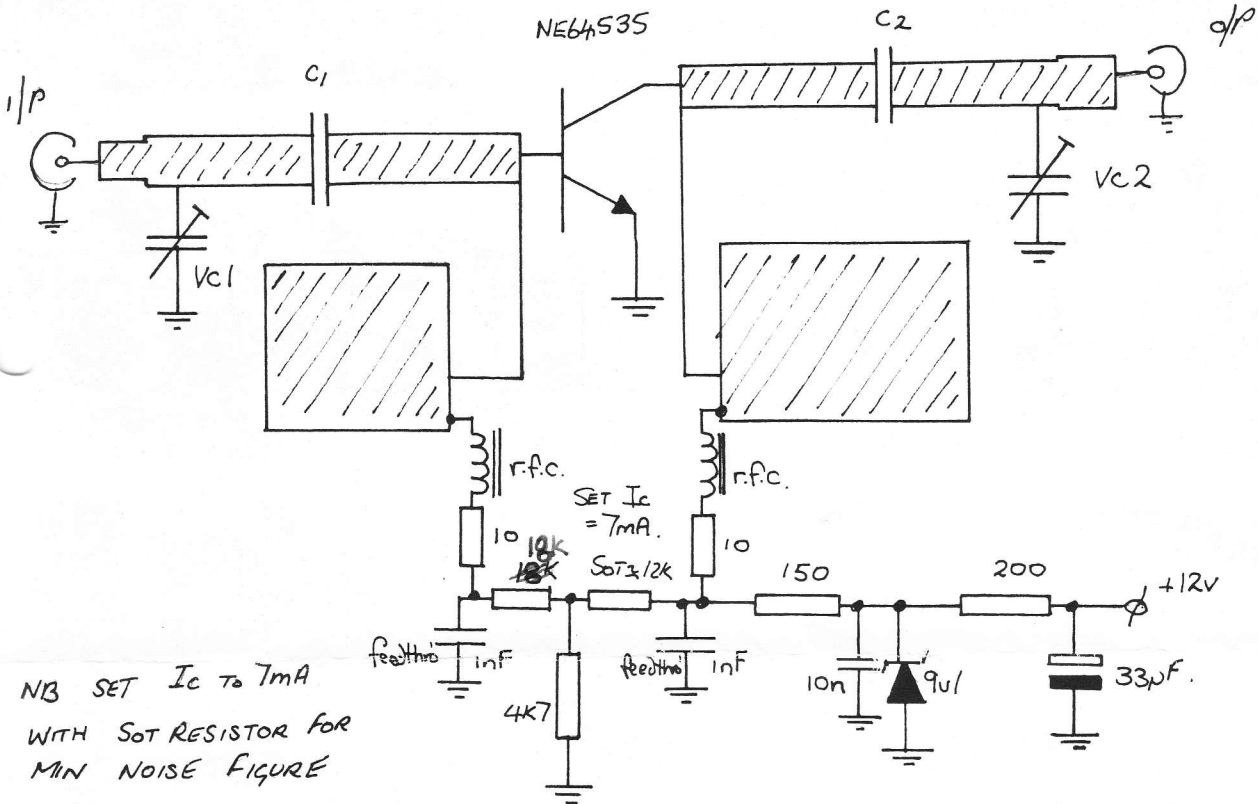


ELECTRONIC DESIGN
CONSULTANTS
LMW ELECTRONICS

Prop. C.M. Smith B.Sc.

1296PP4 LOW NOISE PREAMP.



NB SET I_c TO 7mA
WITH SOT RESISTOR FOR
MIN NOISE FIGURE

COMPONENTS

- C1 & C2 - 22pF CHIP CAPACITORS.
- r.f.c. - FERRITE BEAD FX1115 ON 100L RESISTOR LEAD
- VC1 & VC2 0.25 TO 1.5pF PTFE TRIMMER.
- 9V1 ZENER DIODE.
- 1nF FEED THROUGH SOLDER IN CAPACITORS.
- ALL BIAS COMPONENTS BUILT NEATLY ON UNDER SIDE OF BOARD.

LAYOUT

