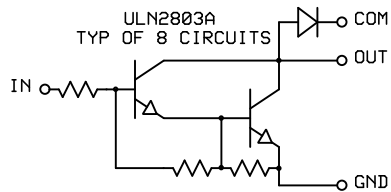
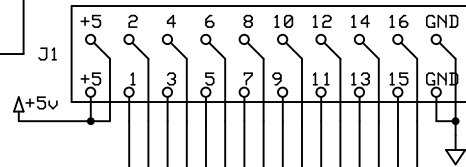


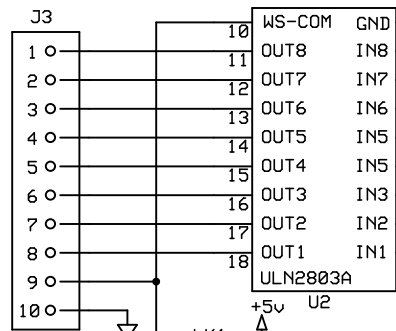
POPULATE AS NEEDED
FOR TYPE OF OUTPUTS USED
RELAY BD, LOGIC OR DRIVERS

DRIVERS OPTIONAL, JUMPER ACROSS
FOR DIRECT LOGIC LEVEL OUT

To 16 Relay Module



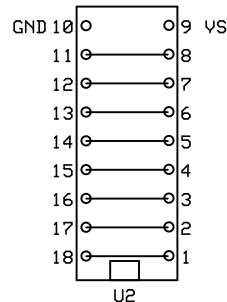
DRIVER OR
LOGIC LEVEL
OUTPUTS



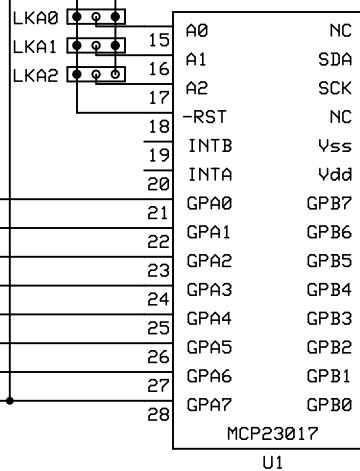
LINK1 IS TO BE USED ONLY WHEN
U2 IS NOT USED AND +5V IS NEEDED ON J3

IF J3 OR J4 USED FOR LOGIC LEVEL SIGNALS
JUMPER SIGNALS ACROSS THE SOCKET

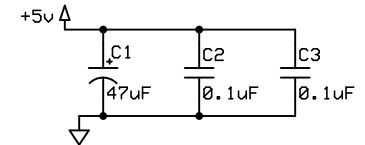
8 POSITION DIP JUMPER
1825190-7
DIGI-KEY 450-2130-ND



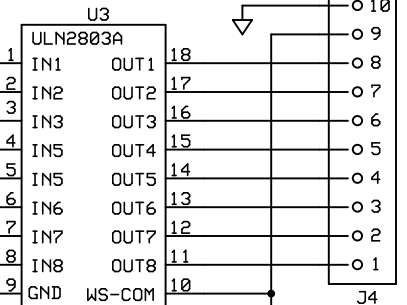
I2C Addresses 020H to 027H



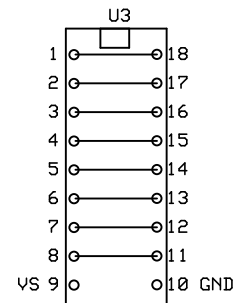
U1



DRIVER OR
LOGIC LEVEL
OUTPUTS



LINK2 IS TO BE USED ONLY WHEN
U3 IS NOT USED AND +5V IS NEEDED ON J4



VS 9

MacGuffin

I0 Expander

J0

Rev 3.0

06/AUG/2021

SHT 1 of 1